

SUNSHADING

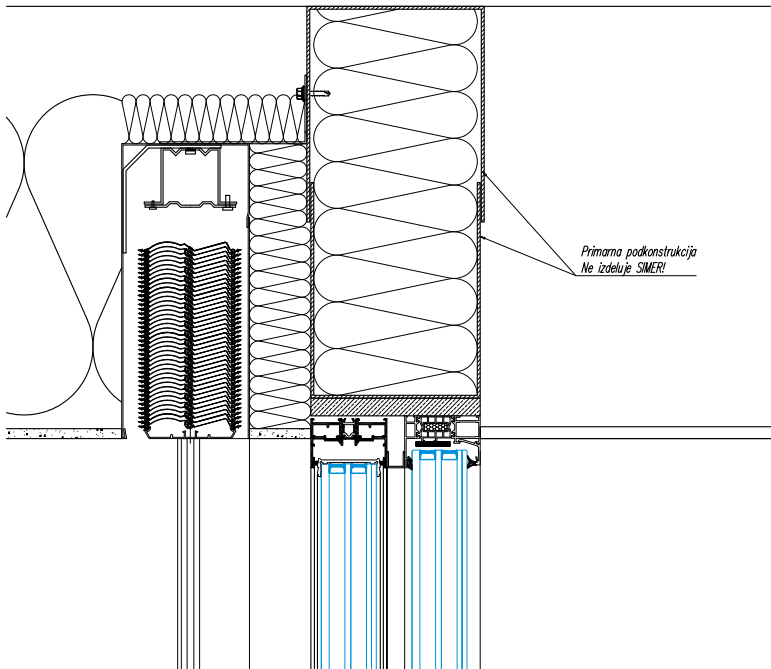
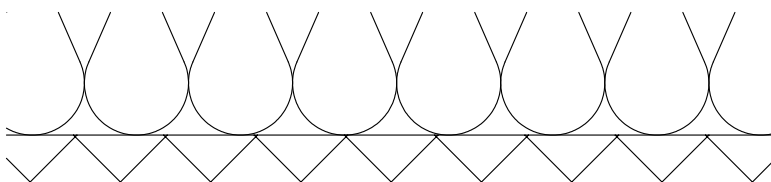
Modern varieties of blinds can also be a stylish addition to the exterior appearance of the building or a decorative addition to the interior of the room. Some blinds even include a burglar-resistant component. By categorizing the blinds appropriately, we wish to make it easier to decide for the right type. External blinds are used for protection against the sun's rays and curious looks, offering darkening of the room and privacy as well as fashionable and elegant looks. The color of the blinds is available in a wide color palette. Besides the attractive design, it also provides a beautiful appearance of the entire building.



SUNSHADING - External KRPAN blinds

External KRPAN blinds are available in 80 mm (width of strengthened slats). Installed can be on all types of windows and doors, and the installation is quick and easy. The guides are aluminum eloxated and have shock-absorbing PVC inserts. Blinds can be set according to the angle of the sun's rays, thereby regulating the intensity of light in the room. They are also indispensable in providing a favorable microclimate. They prevent the heating of glass by regulating the direct entry of heat that would heat the room.

You can choose from manual drive handle or a motor drive (switch or remote control).



SUNSHADING-Interior Venetian blinds

Interior Venetian blinds are suitable blinds for windows and doors where shading is required but the glass is usually not exposed to intensive and long-lasting sun's rays. The amount of light is regulated by using a command wand, and the blinds are pulled up and lowered by using a lifting string. They can be manufactured in various colors which will enable you to create interesting color combinations in the rooms. As the blinds are not exposed to external impacts, they have an extremely long useful life.



SUNSHADING - Aluminum roller shutters

Our aluminum roller shutters are the ideal solution for your modernization or new-build project. Whether you want something offering particularly efficient insulation, something providing extra-strong protection against break-ins or something with a very small winding diameter, we have the perfect profile for any requirements. Motorized elements stop the roller shutter from being forced up and make it more difficult for intruders to break in thanks to rigid shaft connectors.

